

STANDARD CONSTRUCTION

MODEL: UFC-12-300T-D
 FRAME: 16 GA GALV. STEEL
 BLADES: 20 GA. GALV. STEEL
 PERFORATED BLADES:
 22 GA. GALV. STEEL 1/8" DIA. X
 3/16" SECURED UNDERSIDE
 INSULATION: 6# DENSITY PCF MINERAL
 WOOL INSULATION
 FINISH: MILL

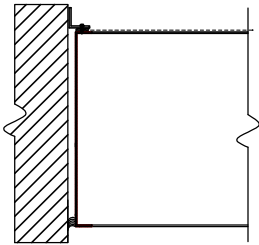
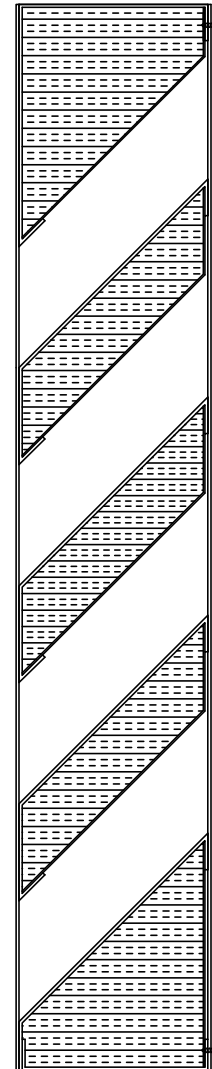
NOTES

1. ALL LOUVERS TO BE FABRICATED 1/4" UNDER LISTED OPNG. SIZES UNLESS SPECIFIED "ACTUAL"
2. ALL OPNG SIZES TO BE FIELD VERIFIED AND GUARANTEED BY OTHERS PRIOR TO FABRICATION.
3. OTHER SURROUNDING FINISHES ARE FOR REFERENCES ONLY AND TO BE SUPPLIED BY OTHERS.

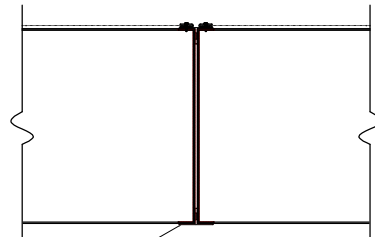
(A) 2-1/8" TYPICAL T-MULLION

(B) 1-1/2" FLANGE

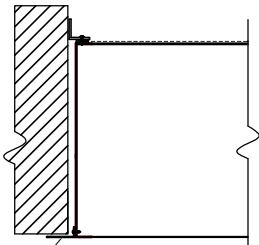
(C) 11-7/8" X 1" X .081" SEMI-INVISIBLE MULLION



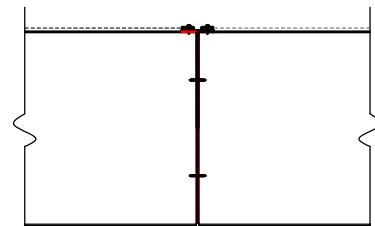
BOX FRAME



(A) VERTICAL VISIBLE MULLION



FLANGE FRAME



(C) VERTICAL SEMI-INVISIBLE MULLION



DEPENDABLE PRODUCTS SINCE 1965

1855 SOUTH 54TH AVENUE, CICERO, IL. 60650

ARCH/ENGR: _____ CUSTOMER: _____

PROJECT: _____ TITLE: UFC-12/SERIES

REV.	DESCRIPTION	DATE	BY

DATE: _____	DRAWN: _____	DRWG #:
SCALE: 1:1	CHKD: _____	